



## EDMONTON

## 49 Vickers Street

\$375,000 + GST (If applicable)

## SHED & LAND PACKAGES - BUILD SOMETHING!

Get in quick on the last remaining developers stock.

Go Commercial are making it easy for you to construct your own shed here at South Cairns Business Park with our shed and land packages. Or why not build more than you need and lease out the balance providing you with future expansion space? From conception to completion, our team of preferred associates makes the building process simple.

- > Land Size 1,569m<sup>2</sup>\*
- > Underground Power
- > All Council Services Connected
- > Flat Level Blocks Ready For Construction
- > Close To Cairns CBD

Check out the video on how to get started by setting up a self-managed super fund. Call us today to arrange a meeting to show you how to become your own landlord and build your own steel or concrete-tilt panel shed.

For more information contact Stuart Carr on 0408 066 517.

### PROPERTY DETAILS

Land Area	1,569m <sup>2</sup> *
Lot 99 on SP212585	
Primary Land Use	Subdivided land
Zoning	Industrial

### AGENT DETAILS



**Stuart Carr**

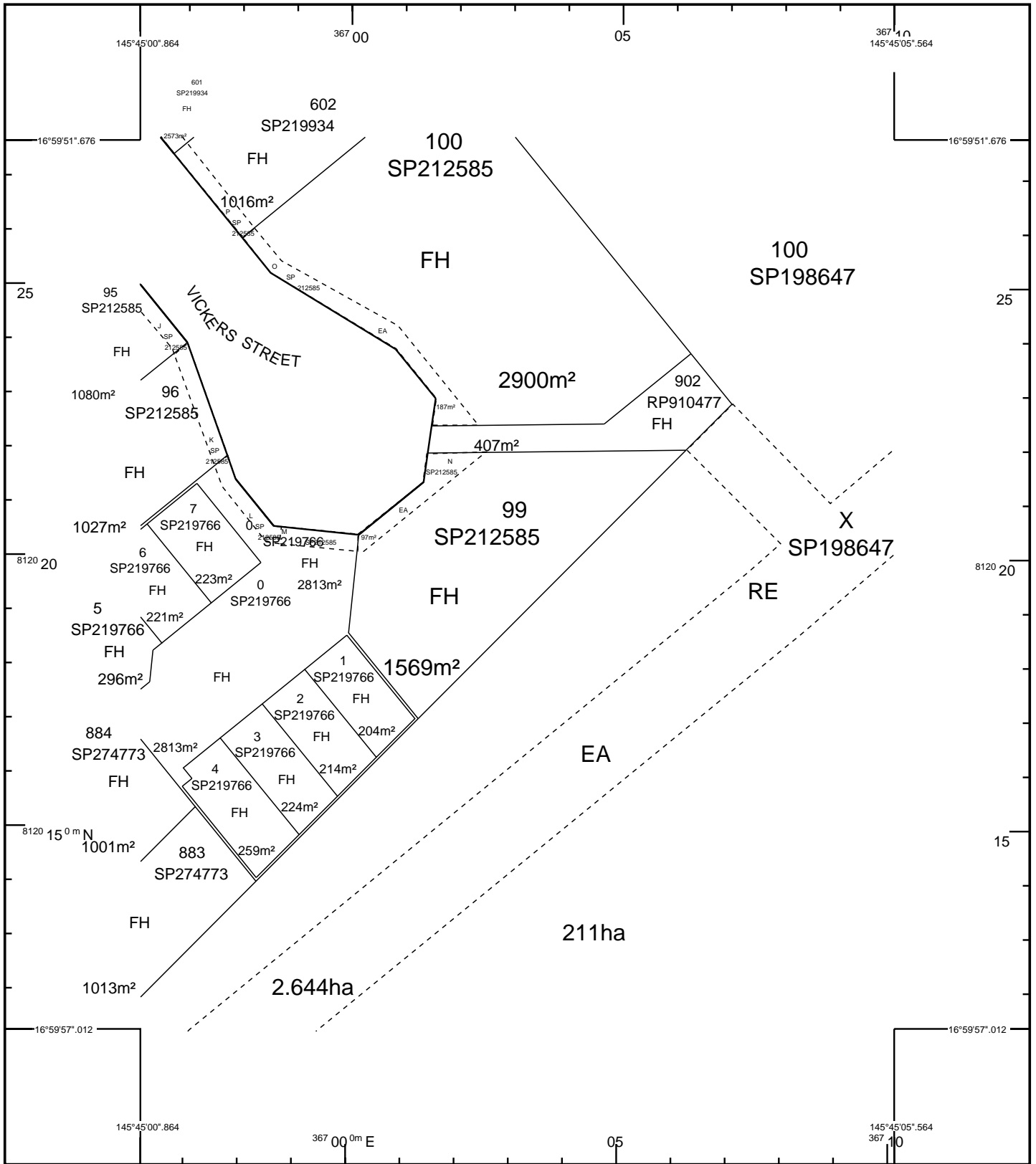
P 07 4054 3888

M 0408 066 517

[stuart.carr@gocommercial.net.au](mailto:stuart.carr@gocommercial.net.au)

*\*Approximately.*

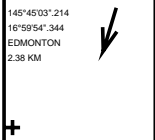
*Disclaimer: In preparing this information Go Commercial (Cairns) has used its best efforts to ensure that the information contained is true and accurate, however, the Office and the Agent provides no guarantees, undertakings or warnings concerning the accuracy, completeness or up-to-date nature of the information provided by the Vendor or other Persons. All interested parties are responsible for their own independent inquiries in order to determine whether or not this information is in fact accurate.*



STANDARD MAP NUMBER  
8064-23333



MAP WINDOW POSITION & NEAREST LOCATION



SUBJECT PARCEL DESCRIPTION

DCDB	99/SP212585
Lot/Plan	99/SP212585
Area/Volume	1569m²
Tenure	FREEHOLD
Local Government	CAIRNS REGIONAL
Locality	EDMONTON
Segment/Parcel	9821/807

CLIENT SERVICE STANDARDS

PRINTED (dd/mm/yyyy) 27/03/2017

DCDB 25/03/2017

Users of the information recorded in this document (the Information) accept all responsibility and risk associated with the use of the Information and should seek independent professional advice in relation to dealings with property.

Despite Department of Natural Resources and Mines(DNRM)'s best efforts, DNRM makes no representations or warranties in relation to the Information, and, to the extent permitted by law, exclude or limit all warranties relating to correctness, accuracy, reliability, completeness or currency and all liability for any direct, indirect and consequential costs, losses, damages and expenses incurred in any way (including but not limited to that arising from negligence) in connection with any use of or reliance on the Information



**SmartMap**

An External Product of  
SmartMap Information Services  
Based upon an extraction from the  
Digital Cadastral Data Base



(c) The State of Queensland,  
(Department of Natural  
Resources and Mines) 2017.

For further information on SmartMap products visit <http://nrw.qld.gov.au/property/mapping/blinmap>