

Artists Impression



EDMONTON

12 Ridley Close

\$310,000 + GST (If applicable)

SHED & LAND PACKAGES - BUILD SOMETHING!

Get in quick on the last remaining developers stock.

Go Commercial are making it easy for you to construct your own shed here at South Cairns Business Park with our shed and land packages. Or why not build more than you need and lease out the balance providing you with future expansion space? From conception to completion, our team of preferred associates makes the building process simple.

- > Land Size 1,210m²*
- > Underground Power
- > All Council Services Connected
- > Flat Level Blocks Ready For Construction
- > Close To Cairns CBD

Check out the video on how to get started by setting up a self-managed super fund. Call us today to arrange a meeting to show you how to become your own landlord and build your own steel or concrete-tilt panel shed.

For more information contact Stuart Carr on 0408 066 517.

PROPERTY DETAILS

Land Area	1,210m ² *
Lot 881 on SP274773	
Primary Land Use	Subdivided land
Zoning	Industrial

AGENT DETAILS



Stuart Carr

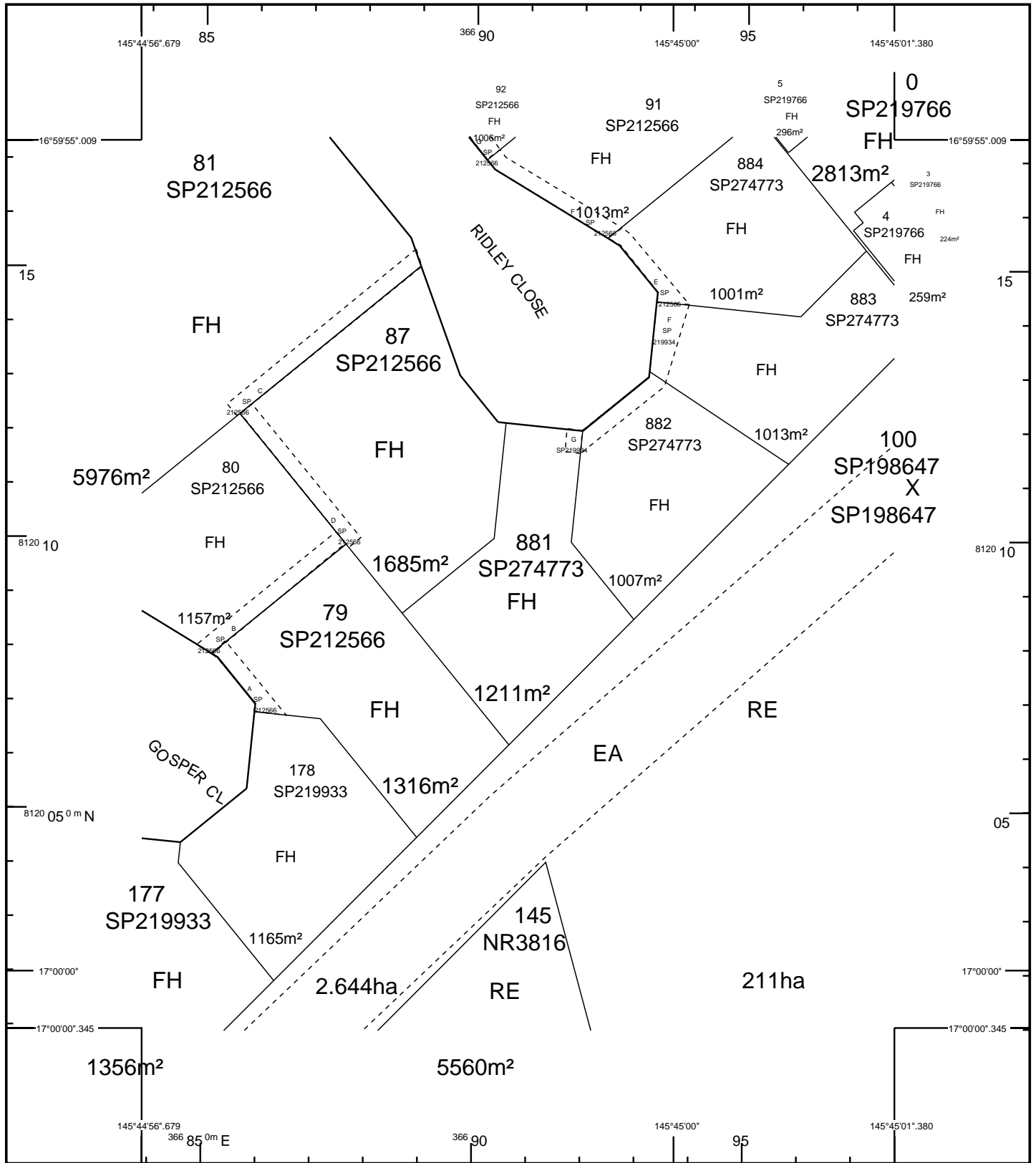
P 07 4054 3888

M 0408 066 517

stuart.carr@gocommercial.net.au

**Approximately.*

Disclaimer: In preparing this information Go Commercial (Cairns) has used its best efforts to ensure that the information contained is true and accurate, however, the Office and the Agent provides no guarantees, undertakings or warnings concerning the accuracy, completeness or up-to-date nature of the information provided by the Vendor or other Persons. All interested parties are responsible for their own independent inquiries in order to determine whether or not this information is in fact accurate.



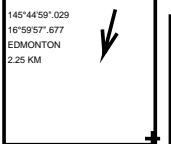
STANDARD MAP NUMBER
8064-32222



SmartMap

An External Product of
SmartMap Information Services
Based upon an extraction from the
Digital Cadastral Data Base

MAP WINDOW POSITION &
NEAREST LOCATION



SUBJECT PARCEL DESCRIPTION

DCDB	
Lot/Plan	881/SP274773
Area/Volume	1211m ²
Tenure	FREEHOLD
Local Government	CAIRNS REGIONAL
Locality	EDMONTON
Segment/Parcel	9821/861

CLIENT SERVICE STANDARDS

PRINTED (dd/mm/yyyy)	27/03/2017
DCDB	25/03/2017
Users of the information recorded in this document (the Information) accept all responsibility and risk associated with the use of the Information and should seek independent professional advice in relation to dealings with property.	
Despite Department of Natural Resources and Mines(DNRM)'s best efforts, DNRM makes no representations or warranties in relation to the Information, and, to the extent permitted by law, exclude or limit all warranties relating to correctness, accuracy, reliability, completeness or currency and all liability for any direct, indirect and consequential costs, losses, damages and expenses incurred in any way (including but not limited to that arising from negligence) in connection with any use of or reliance on the Information	
For further information on SmartMap products visit http://nrw.qld.gov.au/property/mapping/blinmap	



(c) The State of Queensland,
(Department of Natural
Resources and Mines) 2017.

